



Our *passion* is enclosures.



technoCASE

Multi-variable enclosures made of ABS

Technical data

technoCASE



Enclosure: Thermoplastic ABS, halogen-free. 1° mould slope for casting ejection, internal measures diminishing circulatory towards enclosure bottom by 1°.

Flammability: UL 94 HB

Integrated recess: In the cover for membrane keypad or front plates

Components: Fastening dome for self-tapping screws in the lower and upper section.

Ingress protection: IP66 / EN 60529

Gasket: Silicone moulded gasket (-40°C to +120°C)

Lid screws: Stainless steel 1.4567 (V2A), captive

Design covers: Latching, thermoplastic ABS, halogen-free in RAL 7035, light grey.

Surface: RAL 7035, light grey

Optionally available:

Internal hinges: Polypropylene (PP)

Gasket: EMC gasket (-55°C to +160°C)

EMC screen: Aluminium coating 2.5µm

Surface: Special material on request

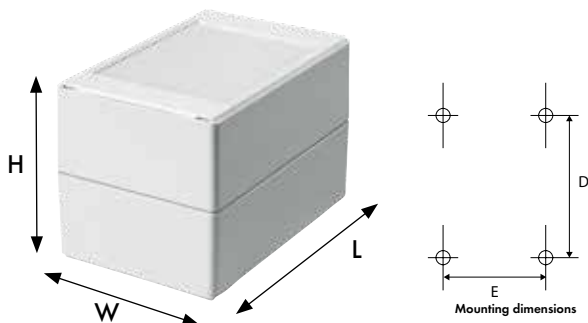
Further options, see delivery overview.

Delivery overview technoCASE

Type	Mat. no.	L	W	H	D	E	g	M	T	F	L	IS	S	C	P	A	SF
TA 080	201.080.000	80	80	80	66	66	192	●	●	●	●	●	●	●	●	●	●
TA 082	201.082.000	120	80	80	106	66	240	●	●	●	●	●	●	●	●	●	●
TA 084	201.084.000	160	80	80	146	66	286	●	●	●	●	●	●	●	●	●	●
TA 086	201.086.000	240	80	80	226	66	386	●	●	●	●	●	●	●	●	●	●
TA 120	201.120.000	120	120	90	106	106	348	●	●	●	●	●	●	●	●	●	●
TA 122	201.122.000	200	120	90	186	106	484	●	●	●	●	●	●	●	●	●	●
TA 124	201.124.000	240	120	90	226	106	530	●	●	●	●	●	●	●	●	●	●
TA 160	201.160.000	160	160	90	146	146	474	●	●	●	●	●	●	●	●	●	●
TA 162	201.162.000	240	160	90	226	146	620	●	●	●	●	●	●	●	●	●	●
TAH 162	202.162.000	240	160	120	226	146	795	●	●	●	●	●	●	●	●	●	●
TA 202	201.202.000	300	200	120	286	186	1.120	●	●	●	●	○	●	○	●	●	○
TAH 202	202.202.000	300	200	160	286	186	1.290	●	●	●	●	○	●	○	●	●	○
TA 242	201.242.000	360	240	120	346	226	1.500	●	●	●	●	○	●	○	●	●	○
TAH 242	202.242.000	360	240	160	346	226	1.730	●	●	●	●	○	●	○	●	●	○
TAF 080	200.080.000	80	80	60	66	66	156	●	●	●	●	●	●	●	●	●	●
TAF 082	200.082.000	120	80	60	106	66	196	●	●	●	●	●	●	●	●	●	●
TAF 084	200.084.000	160	80	60	146	66	234	●	●	●	●	●	●	●	●	●	●
TAF 086	200.086.000	240	80	60	226	66	320	●	●	●	●	●	●	●	●	●	●
TAF 120	200.120.000	120	120	60	106	106	272	●	●	●	●	●	●	●	●	●	●
TAF 122	200.122.000	200	120	60	186	106	398	●	●	●	●	●	●	●	●	●	●
TAF 124	200.124.000	240	120	60	226	106	434	●	●	●	●	●	●	●	●	●	●
TAF 160	200.160.000	160	160	60	146	146	394	●	●	●	●	●	●	●	●	●	●
TAF 162	200.162.000	240	160	60	226	146	534	●	●	●	●	●	●	●	●	●	●
TAF 202	200.202.000	300	200	80	286	186	950	●	●	●	●	○	●	○	●	●	○
TAF 242	200.242.000	360	240	80	346	226	1.270	●	●	●	●	○	●	○	●	●	○

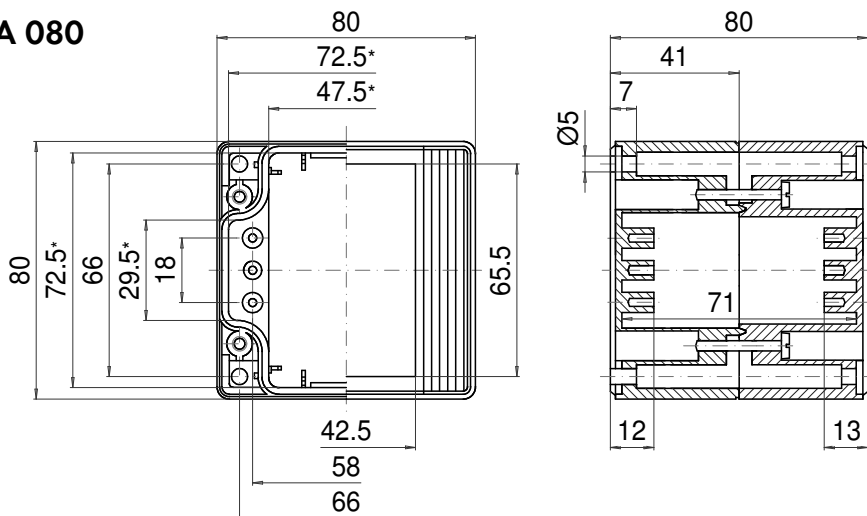
□ Standard ● Available ○ Not available

Approvals:



ROLEC Attachment and mounting dimensions technoCASE

TA 080

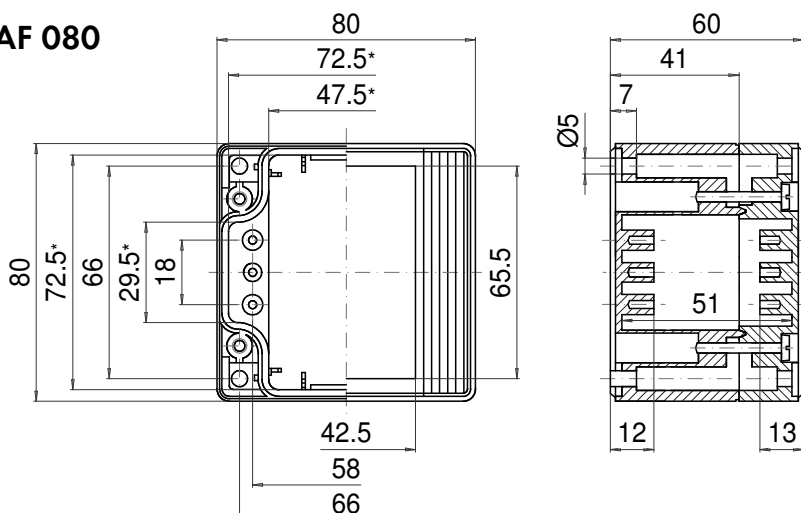


Maximum number of cable glands per enclosure side

C	A		A/B/C/D	
	B	D	A/B	C/D
			PG 7	4 2
M 16			PG 9	3 1
			PG 11	2 1
M 20			PG 13,5	2 1
			PG 16	1 1
M 25			PG 21	1
M 32			PG 29	
M 40			PG 36	
M 50			PG 42	
M 63			PG 48	

* Please note: Mould slope for casting ejection, dimensions in the amount of the bottom!

TAF 080

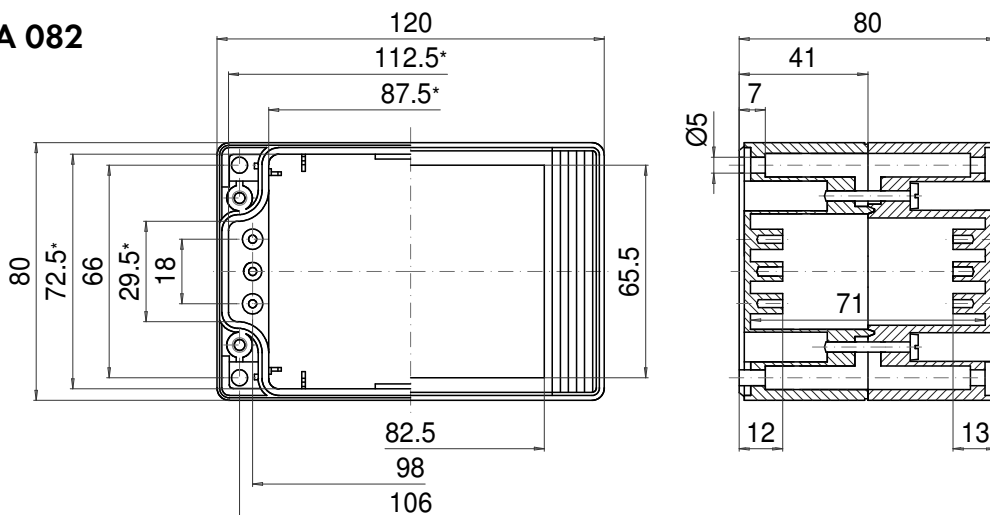


Maximum number of cable glands per enclosure side

C	A		A/B/C/D	
	B	D	A/B	C/D
			PG 7	4 2
M 16			PG 9	3 1
			PG 11	2 1
M 20			PG 13,5	2 1
			PG 16	1 1
M 25			PG 21	1
M 32			PG 29	
M 40			PG 36	
M 50			PG 42	
M 63			PG 48	

* Please note: Mould slope for casting ejection, dimensions in the amount of the bottom!

TA 082

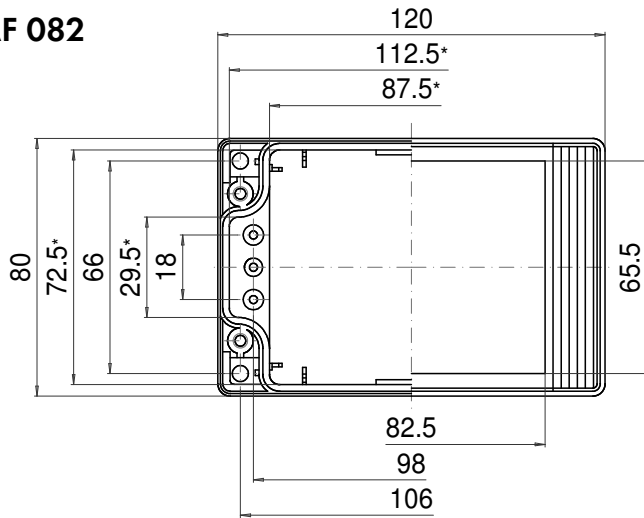


Maximum number of cable glands per enclosure side

C	A		A/B/C/D	
	B	D	A/B	C/D
			PG 7	10 2
M 16			PG 9	6 1
			PG 11	3 1
M 20			PG 13,5	3 1
			PG 16	3 1
M 25			PG 21	2
M 32			PG 29	
M 40			PG 36	
M 50			PG 42	
M 63			PG 48	

* Please note: Mould slope for casting ejection, dimensions in the amount of the bottom!

TAF 082

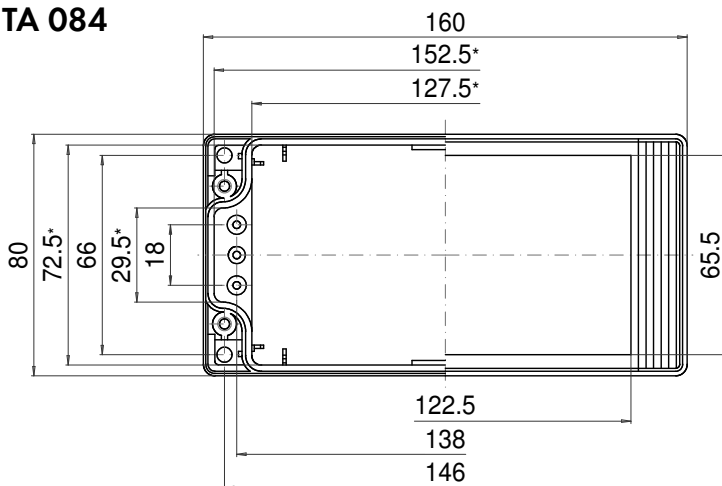


Maximum number of cable glands per enclosure side

C	A		A/B/C/D	
	B	D		
			PG 7	10 2
M 16			PG 9	6 1
			PG 11	3 1
M 20			PG 13,5	3 1
			PG 16	3 1
M 25			PG 21	2
M 32			PG 29	
M 40			PG 36	
M 50			PG 42	
M 63			PG 48	

* Please note: Mould slope for casting ejection, dimensions in the amount of the bottom!

TA 084

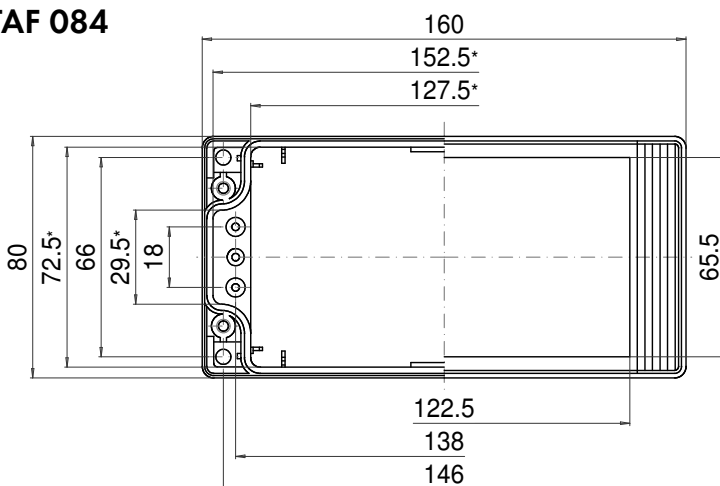


Maximum number of cable glands per enclosure side

C	A		A/B/C/D	
	B	D		
			PG 7	14 2
M 16			PG 9	9 1
			PG 11	5 1
M 20			PG 13,5	4 1
			PG 16	4 1
M 25			PG 21	3
M 32			PG 29	
M 40			PG 36	
M 50			PG 42	
M 63			PG 48	

* Please note: Mould slope for casting ejection, dimensions in the amount of the bottom!

TAF 084



Maximum number of cable glands per enclosure side

C	A		A/B/C/D	
	B	D		
			PG 7	14 2
M 16			PG 9	9 1
			PG 11	5 1
M 20			PG 13,5	4 1
			PG 16	4 1
M 25			PG 21	3
M 32			PG 29	
M 40			PG 36	
M 50			PG 42	
M 63			PG 48	

* Please note: Mould slope for casting ejection, dimensions in the amount of the bottom!

ROLEC Attachment and mounting dimensions technoCASE

TA 086

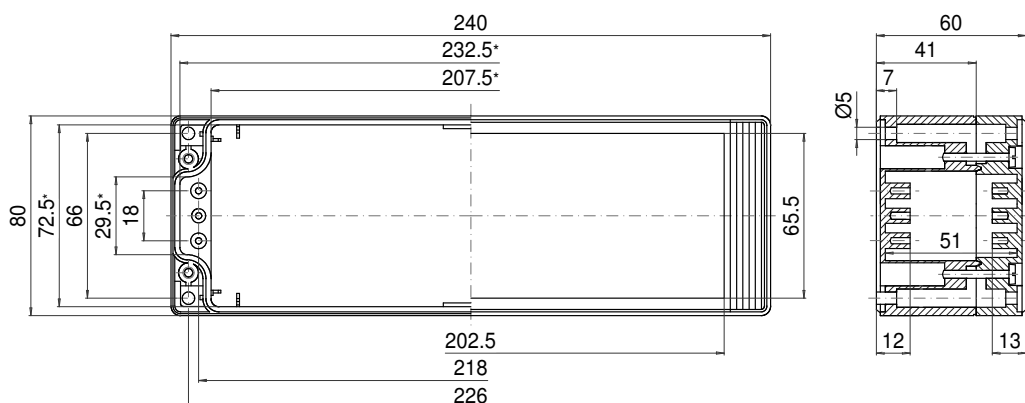


Maximum number of cable glands per enclosure side

A C B D		A/B	C/D
	PG 7	22	2
M 16	PG 9	15	1
	PG 11	8	1
M 20	PG 13,5	7	1
	PG 16	6	1
M 25	PG 21	5	
M 32	PG 29		
M 40	PG 36		
M 50	PG 42		
M 63	PG 48		

* Please note: Mould slope for casting ejection, dimensions in the amount of the bottom!

TAF 086

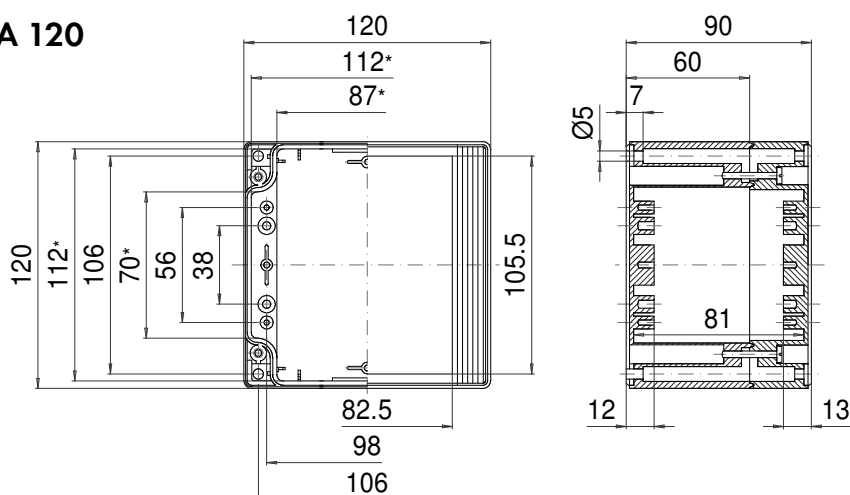


Maximum number of cable glands per enclosure side

A C B D		A/B	C/D
	PG 7	22	2
M 16	PG 9	15	1
	PG 11	8	1
M 20	PG 13,5	7	1
	PG 16	6	1
M 25	PG 21	5	
M 32	PG 29		
M 40	PG 36		
M 50	PG 42		
M 63	PG 48		

* Please note: Mould slope for casting ejection, dimensions in the amount of the bottom!

TA 120

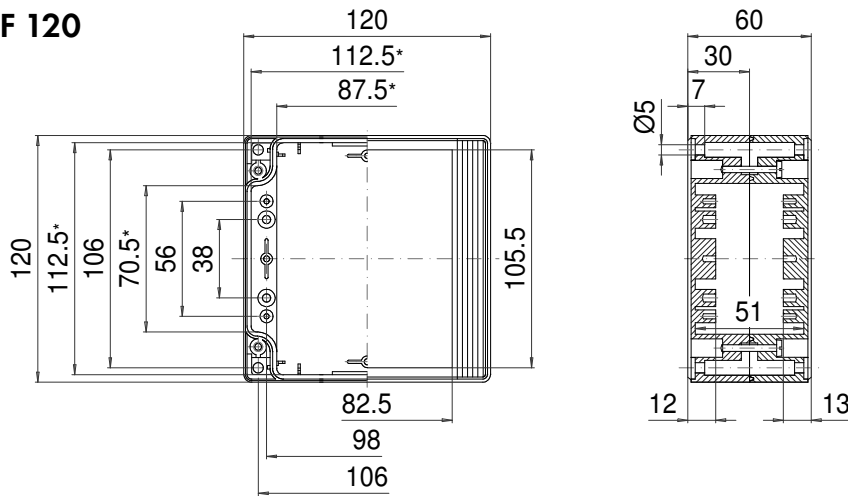


Maximum number of cable glands per enclosure side

A C B D		A/B	C/D
	PG 7	12	11
M 16	PG 9	8	6
	PG 11	6	4
M 20	PG 13,5	5	3
	PG 16	4	3
M 25	PG 21	2	2
M 32	PG 29	2	1
M 40	PG 36	1	1
M 50	PG 42		
M 63	PG 48		

* Please note: Mould slope for casting ejection, dimensions in the amount of the bottom!

TAF 120

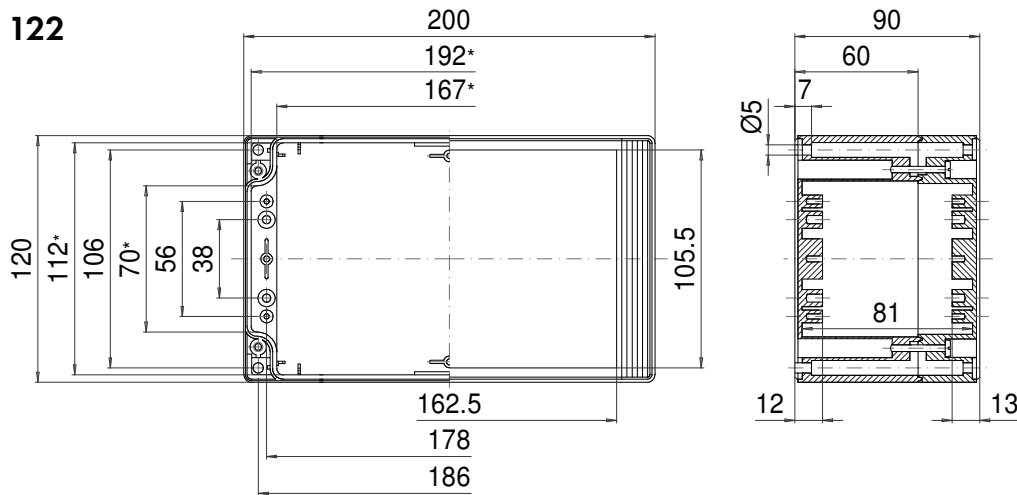


Maximum number of cable glands per enclosure side

C	A		D		A/B/C/D	
	B	PG 7	PG 9	PG 11	PG 13,5	PG 16
M 16			5	4		
			4	3		
			2			
M 20			2			
			2			
M 25						
M 32						
M 40						
M 50						
M 63						

* Please note: Mould slope for casting ejection, dimensions in the amount of the bottom!

TA 122

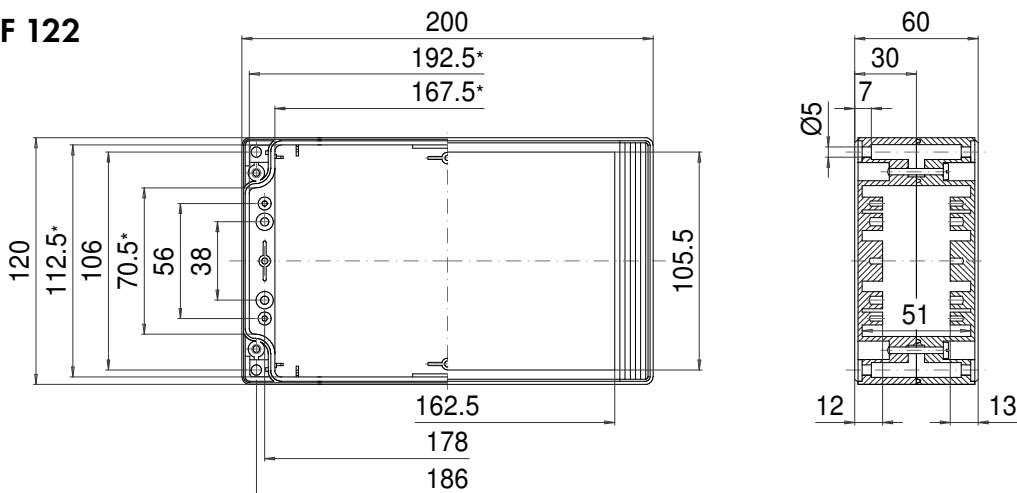


Maximum number of cable glands per enclosure side

C	A		D		A/B/C/D	
	B	PG 7	PG 9	PG 11	PG 13,5	PG 16
M 16			26	11		
			16	6		
			12	4		
M 20			12	3		
			9	3		
M 25			4	2		
M 32			3	1		
M 40			2	1		
M 50						
M 63						

* Please note: Mould slope for casting ejection, dimensions in the amount of the bottom!

TAF 122



Maximum number of cable glands per enclosure side

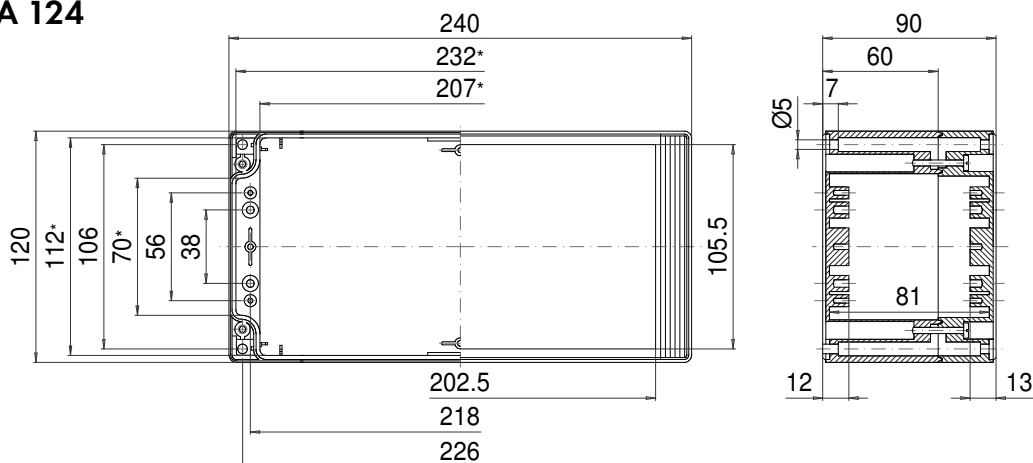
C	A		D		A/B/C/D	
	B	PG 7	PG 9	PG 11	PG 13,5	PG 16
M 16			11	4		
			7	3		
			5			
M 20			4			
			4			
M 25						
M 32						
M 40						
M 50						
M 63						

* Please note: Mould slope for casting ejection, dimensions in the amount of the bottom!

ROLEC Attachment and mounting dimensions

technoCASE

TA 124

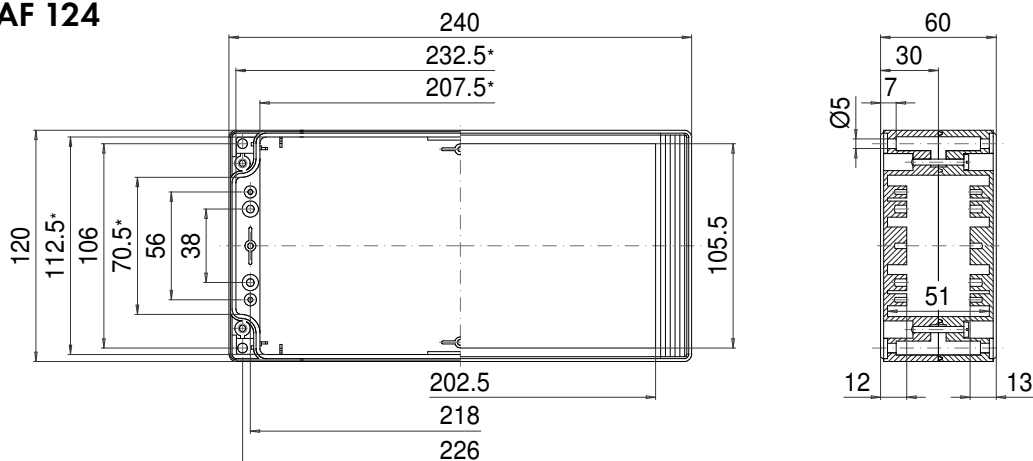


Maximum number of cable glands per enclosure side

A C □ D B	A/B/C/D			
	PG 7	32	11	
M 16	PG 9	22	6	
	PG 11	16	4	
M 20	PG 13,5	13	3	
	PG 16	12	3	
M 25	PG 21	5	2	
M 32	PG 29	4	1	
M 40	PG 36	2	1	
M 50	PG 42			
M 63	PG 48			

* Please note: Mould slope for casting ejection, dimensions in the amount of the bottom!

TAF 124

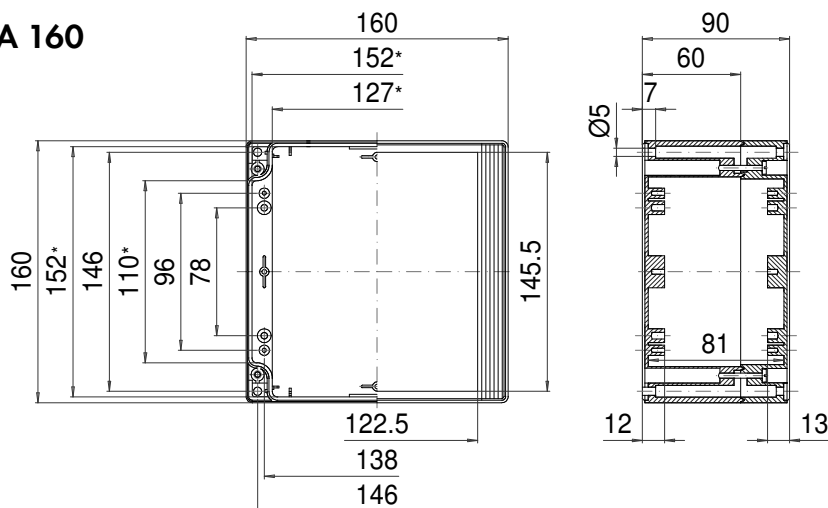


Maximum number of cable glands per enclosure side

A C □ D B	A/B/C/D			
	PG 7	14	4	
M 16	PG 9	9	3	
	PG 11	6		
M 20	PG 13,5	6		
	PG 16	6		
M 25	PG 21			
M 32	PG 29			
M 40	PG 36			
M 50	PG 42			
M 63	PG 48			

* Please note: Mould slope for casting ejection, dimensions in the amount of the bottom!

TA 160

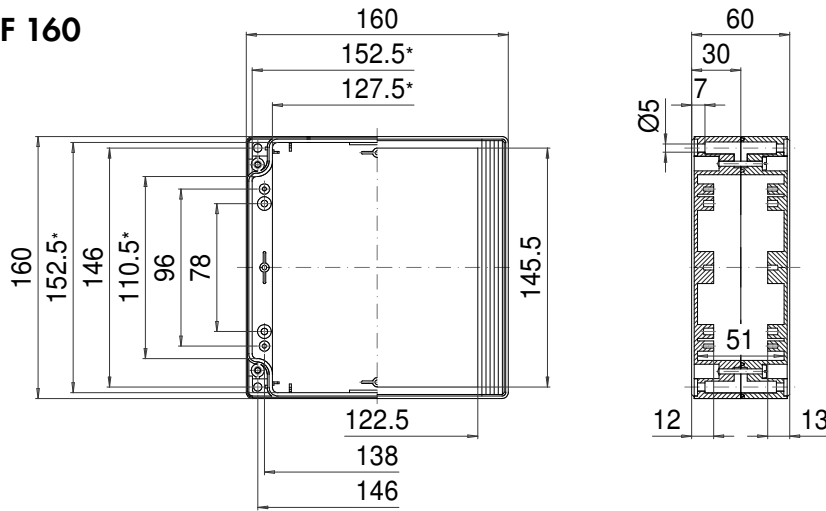


Maximum number of cable glands per enclosure side

A C □ D B	A/B/C/D			
	PG 7	20	17	
M 16	PG 9	13	10	
	PG 11	10	8	
M 20	PG 13,5	8	5	
	PG 16	8	5	
M 25	PG 21	3	3	
M 32	PG 29	2	2	
M 40	PG 36	2	1	
M 50	PG 42			
M 63	PG 48			

* Please note: Mould slope for casting ejection, dimensions in the amount of the bottom!

TAF 160

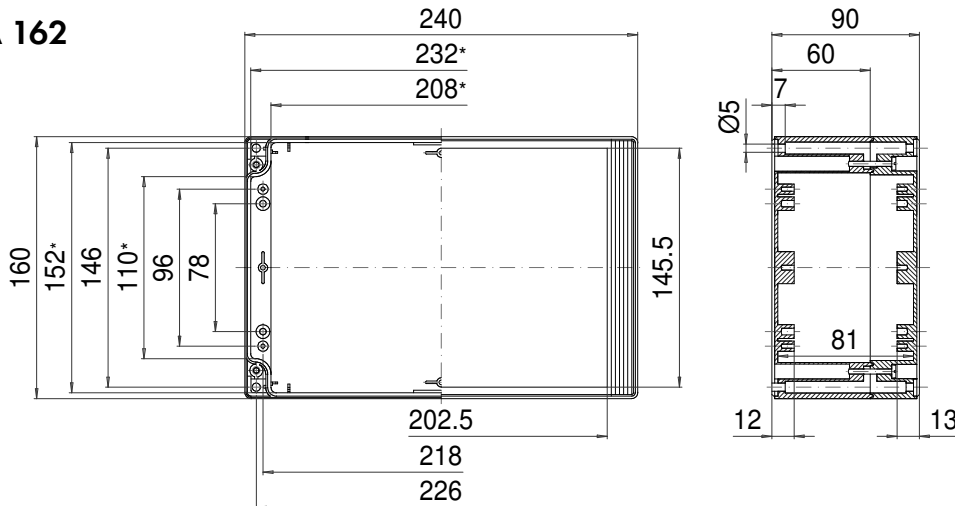


Maximum number of cable glands per enclosure side

C	A		A/B/C/D	
	B	D		
			PG 7	8 6
M 16			PG 9	6 5
			PG 11	4 4
M 20			PG 13,5	4 2
			PG 16	4 2
M 25			PG 21	
M 32			PG 29	
M 40			PG 36	
M 50			PG 42	
M 63			PG 48	

* Please note: Mould slope for casting ejection, dimensions in the amount of the bottom!

TA 162

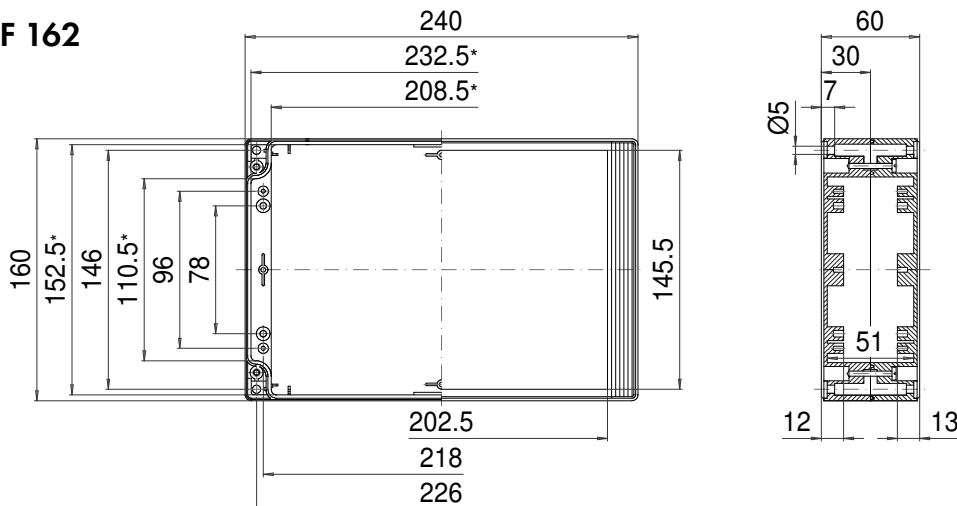


Maximum number of cable glands per enclosure side

C	A		A/B/C/D	
	B	D		
			PG 7	32 17
M 16			PG 9	19 10
			PG 11	16 8
M 20			PG 13,5	13 5
			PG 16	12 5
M 25			PG 21	5 3
M 32			PG 29	4 2
M 40			PG 36	2 1
M 50			PG 42	
M 63			PG 48	

* Please note: Mould slope for casting ejection, dimensions in the amount of the bottom!

TAF 162



Maximum number of cable glands per enclosure side

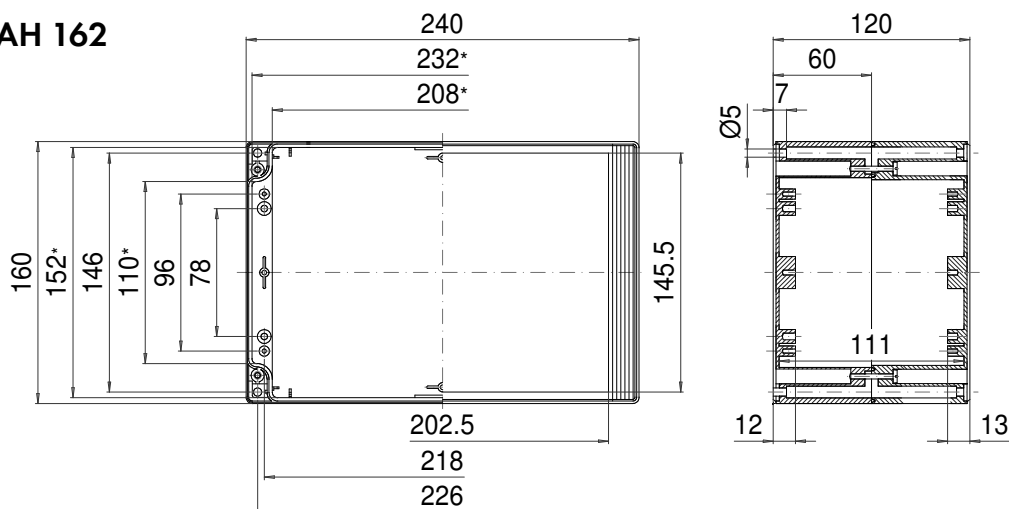
C	A		A/B/C/D	
	B	D		
			PG 7	14 6
M 16			PG 9	9 5
			PG 11	8 4
M 20			PG 13,5	6 2
			PG 16	6 2
M 25			PG 21	
M 32			PG 29	
M 40			PG 36	
M 50			PG 42	
M 63			PG 48	

* Please note: Mould slope for casting ejection, dimensions in the amount of the bottom!

ROLEC Attachment and mounting dimensions

technoCASE

TAH 162

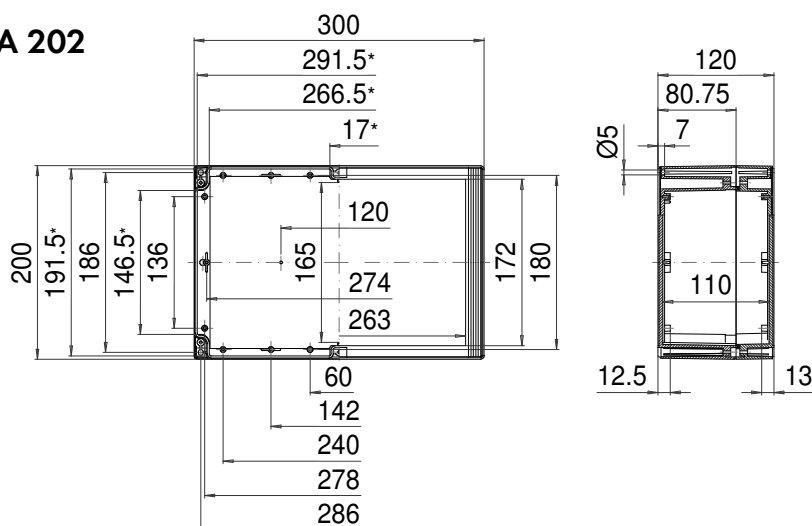


Maximum number of cable glands per enclosure side

C	A		A/B	C/D
	B	D		
			PG 7	32 17
M 16			PG 9	19 10
			PG 11	16 8
M 20			PG 13,5	13 5
			PG 16	12 5
M 25			PG 21	5 3
M 32			PG 29	4 2
M 40			PG 36	2 1
M 50			PG 42	
M 63			PG 48	

* Please note: Mould slope for casting ejection, dimensions in the amount of the bottom!

TA 202

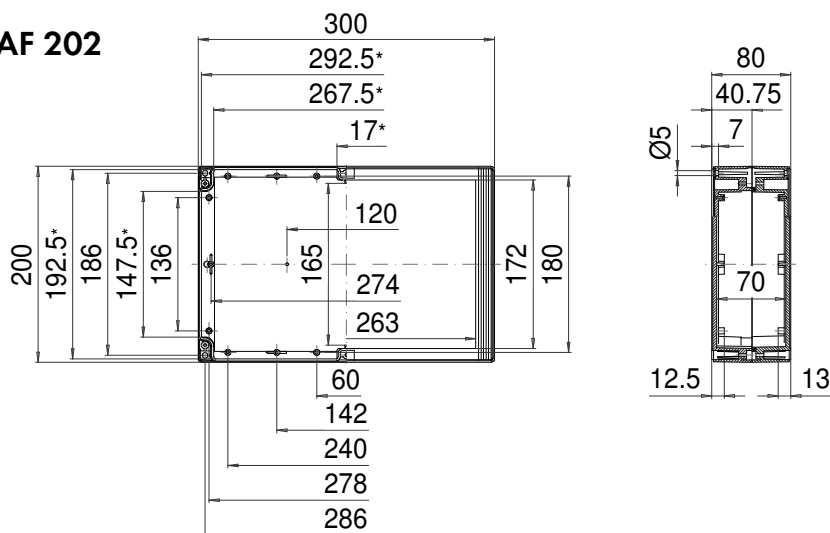


Maximum number of cable glands per enclosure side

C	A		A/B	C/D
	B	D		
			PG 7	50 30
M 16			PG 9	33 21
			PG 11	27 12
M 20			PG 13,5	21 11
			PG 16	15 9
M 25			PG 21	6 3
M 32			PG 29	4 2
M 40			PG 36	
M 50			PG 42	
M 63			PG 48	

* Please note: Mould slope for casting ejection, dimensions in the amount of the bottom!

TAF 202

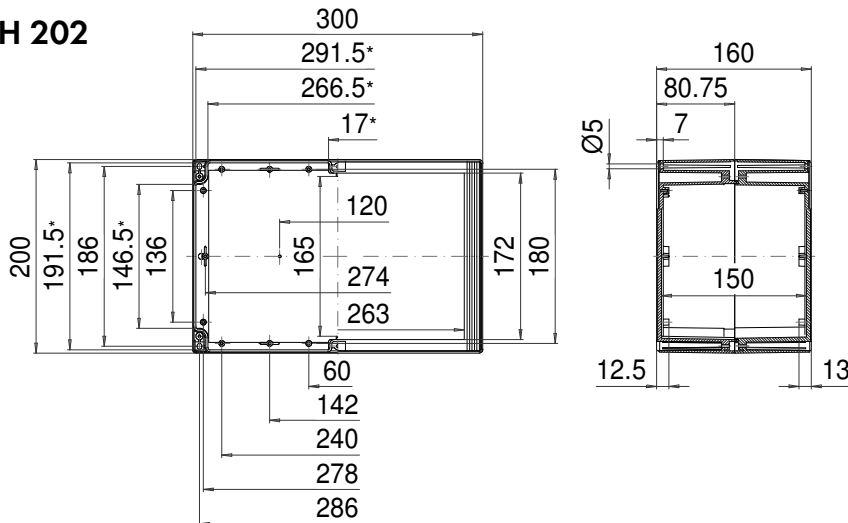


Maximum number of cable glands per enclosure side

C	A		A/B	C/D
	B	D		
			PG 7	20 11
M 16			PG 9	12 7
			PG 11	9 5
M 20			PG 13,5	9 5
			PG 16	7 4
M 25			PG 21	6 3
M 32			PG 29	
M 40			PG 36	
M 50			PG 42	
M 63			PG 48	

* Please note: Mould slope for casting ejection, dimensions in the amount of the bottom!

TAH 202

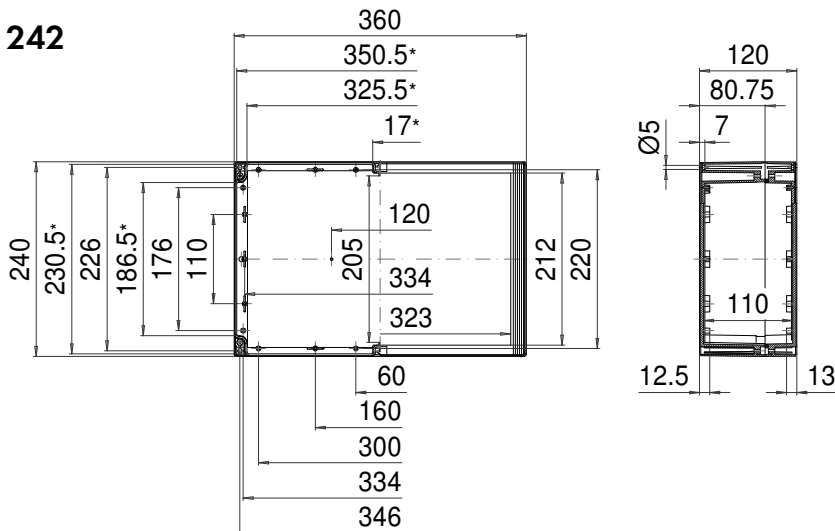


Maximum number of cable glands per enclosure side

C	A		D		A/B/C/D	
	B	PG 7	50	30		
M 16		PG 9	33	21		
		PG 11	27	12		
M 20		PG 13,5	21	11		
		PG 16	15	9		
M 25		PG 21	6	3		
M 32		PG 29	4	2		
M 40		PG 36				
M 50		PG 42				
M 63		PG 48				

* Please note: Mould slope for casting ejection, dimensions in the amount of the bottom!

TA 242

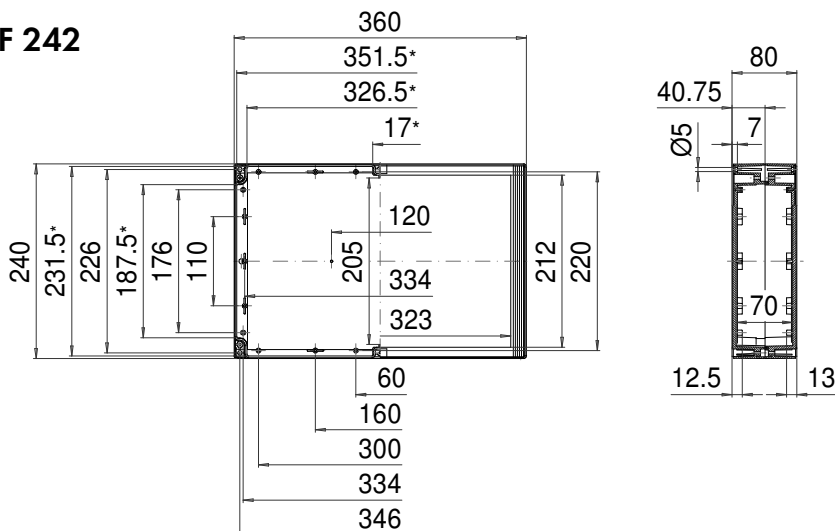


Maximum number of cable glands per enclosure side

C	A		D		A/B/C/D	
	B	PG 7	62	38		
M 16		PG 9	45	24		
		PG 11	35	17		
M 20		PG 13,5	27	14		
		PG 16	18	12		
M 25		PG 21	16	7		
M 32		PG 29	8	4		
M 40		PG 36	5	3		
M 50		PG 42				
M 63		PG 48				

* Please note: Mould slope for casting ejection, dimensions in the amount of the bottom!

TAF 242



Maximum number of cable glands per enclosure side

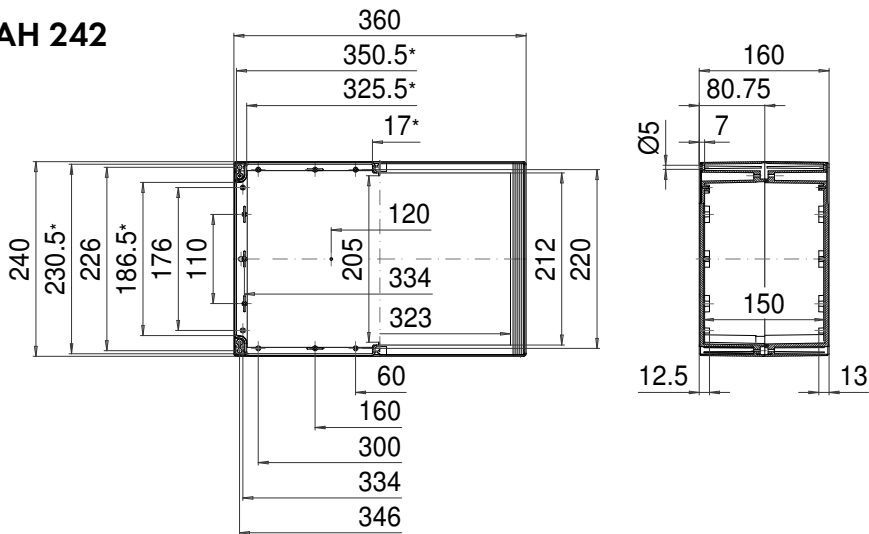
C	A		D		A/B/C/D	
	B	PG 7	25	15		
M 16		PG 9	15	9		
		PG 11	11	7		
M 20		PG 13,5	11	6		
		PG 16	9	5		
M 25		PG 21	8	4		
M 32		PG 29				
M 40		PG 36				
M 50		PG 42				
M 63		PG 48				

* Please note: Mould slope for casting ejection, dimensions in the amount of the bottom!

ROLEC Attachment and mounting dimensions

technoCASE

TAH 242



* Please note: Mould slope for casting ejection, dimensions in the amount of the bottom!

Maximum number of cable glands per enclosure side			
A	B	C	D
M 16	PG 7	62	38
	PG 9	45	24
	PG 11	35	17
M 20	PG 13,5	27	14
	PG 16	18	12
M 25	PG 21	16	7
M 32	PG 29	8	4
M 40	PG 36	5	3
M 50	PG 42		
M 63	PG 48		